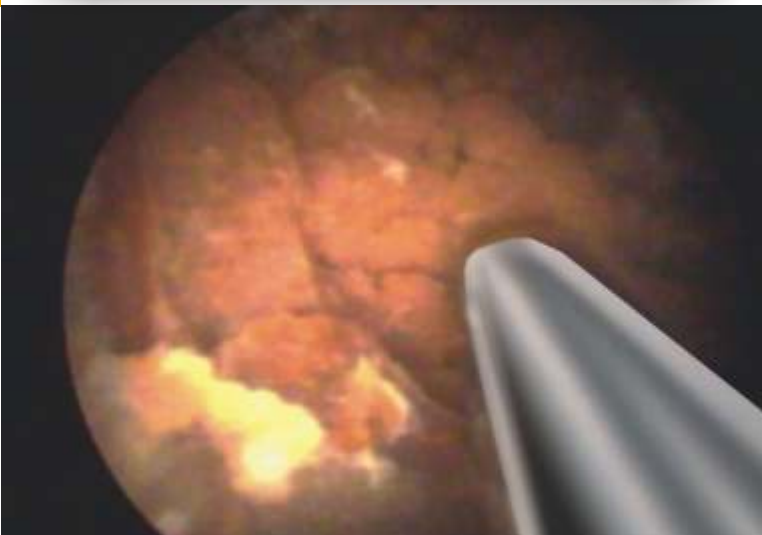


# CALCULI CLAST

# STATUS



INTRACORPOREAL CONTACT TYPE  
LITHOTRIPSY SYSTEM



## FEATURES

Extra Power For Fast Stone Fragmentation Precise And Minimum Forward Movement Of The Probe Minimizes Stone Flying. Power Of The Blast Adjustable. Four Preset Frequencies Of The Blast. Special Accessories And Probes, For Fragmentation Of Renal And Bladder Stones. Adaptors To Connect The Machine To

- Pressurized Oxygen Cylinder,
- To Central Compressed Air Supply,
- To Compressor.

Maintenance Free Design.

## TECHNICAL SPECIFICATIONS

Control Unit

Supply Voltage -230 Volts A.c.

Input Pressure -Max. 6.0 Kg/sq.cm.

Pressure Source -Pressurised Oxygen /  
Compressed Air

### Hand Piece

Dimensions -Dia. 24 Mm X 180 Mm.

Weight -0.150 Gms.

### Probes

0.8 Mm / 1.0 Mm -For Ureter

1.5 Mm / 2 Mm -For Renal & Bladder Stones

## ADDITIONAL ACCESSORIES

Handtool Adaptors For Ureteroscopes

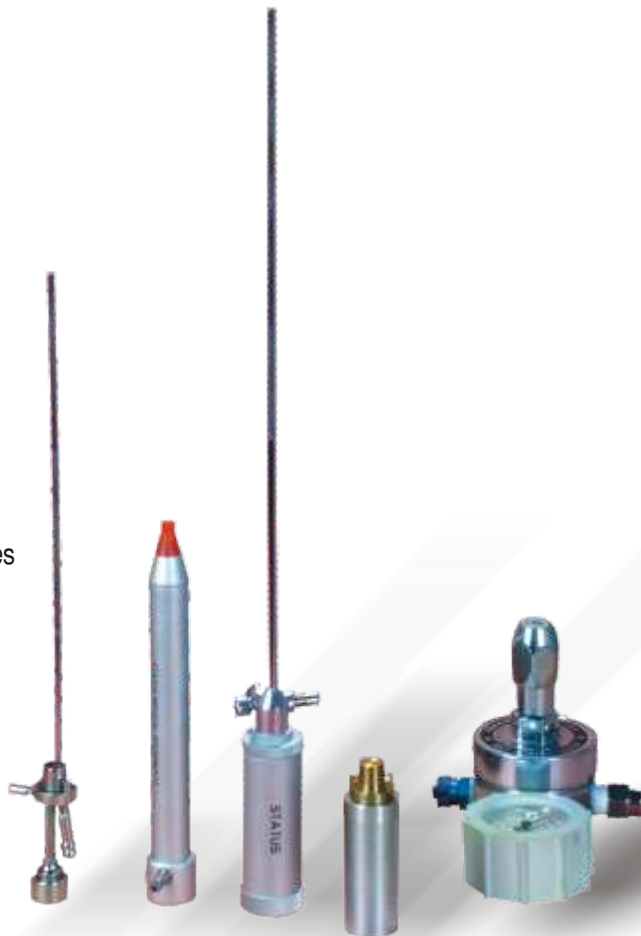
Suction Adaptor For P.C.N.L.

Suction Adaptor For U.R.S.

Modified Cystoscopy Bridge.

Compressor with tank and

Necessary controls.



## STATUS MEDICAL EQUIPMENTS

M-9/A, Additional M.I.D.C. Satara 415004, Maharashtra India

Phone 91-02162-240037, 240045 Fax 91-02162-240743

e-mail- statmedi@vsnl.com

[www.statmedi.net](http://www.statmedi.net)